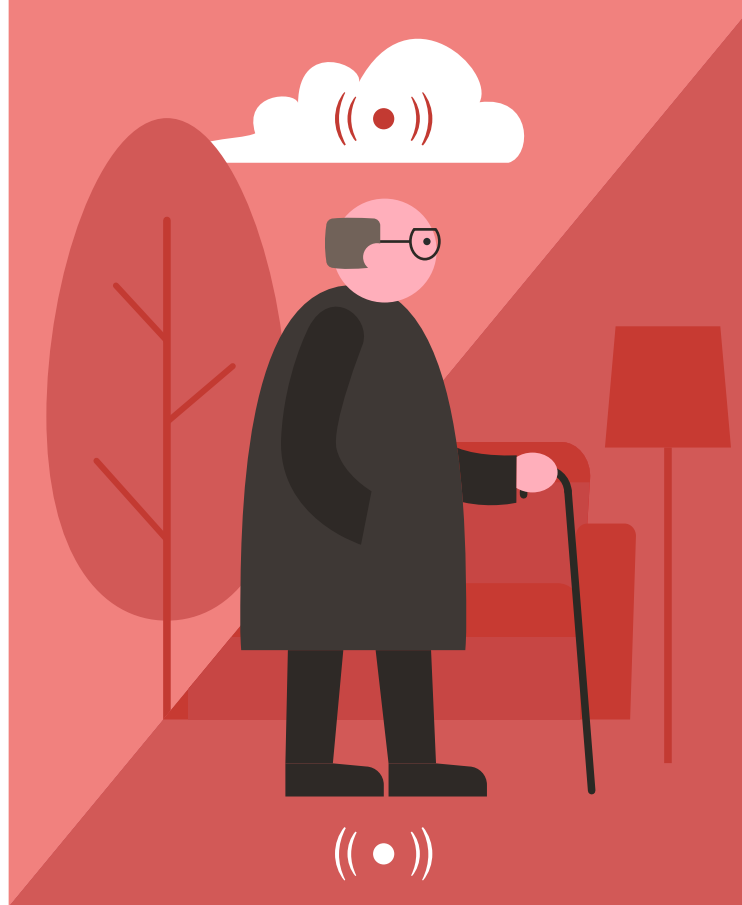


## About INCARE

The INCARE solution enables flexible, scalable and sustainable services which support elderly people to self-manage their daily life, increase their sense of wellbeing and prolong their involvement in the society while reducing the burden on their formal and informal caregivers.

The INCARE solution is modular, highly configurable and adaptable such as to be easily adopted and used by our target users while ensuring economic accessibility for our clients.

The INCARE solution is based on a co-creation approach which involves different categories of users in all phases of the development including design, planning, implementation and testing. Pilot studies in Poland, Hungary, Slovenia and Romania are shaping and validating the final solution.



## Expected Results and Impact

New technologies and services for both indoor and outdoor activities along with intelligent and adaptable features will support seniors to live independently and will reduce or optimize the amount of care they require.

The impact of the INCARE solution will be considered against qualitative and quantitative key performance indicators such as user satisfaction (no lower than 80%), acceptance rate (70-75%), reduced caregiver burden, etc.

The INCARE solution is planned to reach the market in maximum 1 year after project completion. The current business model is based on monthly service fees from our target customers. These are relatives and friends offering constant support to their loved ones but also dedicated institutions for elderly care.

### INCARE user level functionalities

#### NITICS

- health monitoring
- home automation
- fall detection
- agenda&reminders
- alerts
- GUI and tools for caregivers

#### RAPP

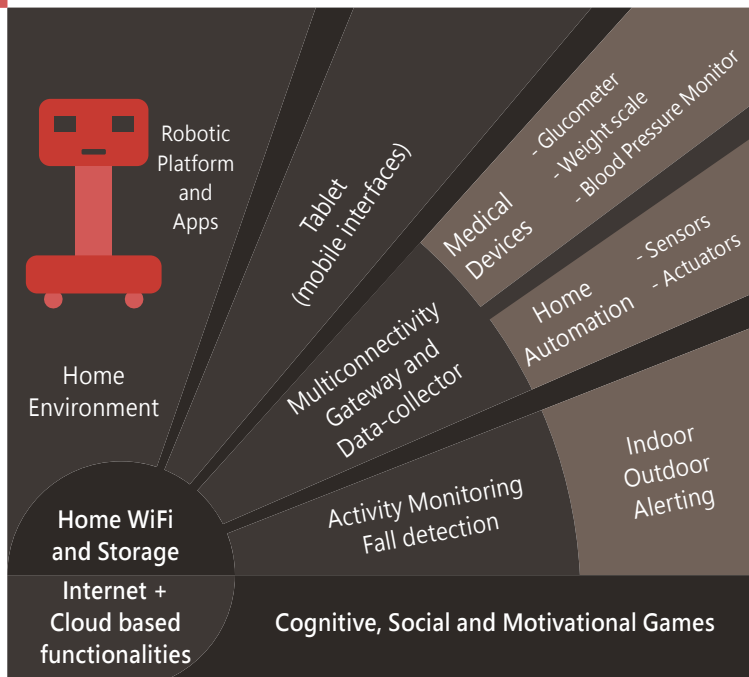
- email (voice msg.)
- cognitive exercises
- news
- weather forecast

#### NEW

- exergames
- hazard detection
- outdoor: fall detection, alerts & localization
- multimodal UI for elderly

## Objectives

1. The INCARE project is addressing the recognized need of integrative technological solutions for sustainable elderly care.
2. INCARE will turn national and European funded projects into viable products by building on two successful solutions developed within previous AAL and European projects.
3. Both NITICS, funded within the AAL 2012 call, and RAPP, funded through the 7th Framework Programme FP7, were designed to support elderly people to live independently in their home environment and social circle.



# CONTACT

Centrul IT pentru Stiinta si  
Tehnologie  
Av. Radu Beller 25, Bucharest,  
Romania  
info@citst.ro  
www.citst.ro



# PARTNERS



IT Center for Science and  
Technology



ECLEXYS SAGL - Switzerland



University POLITEHNICA  
of Bucharest - Romania



ZAVOD IZRIIS

IZRIIS Institute for research  
intergenerational relations,  
gerontology and ICT - Slvoenia



Warsaw University  
of Technology - Poland



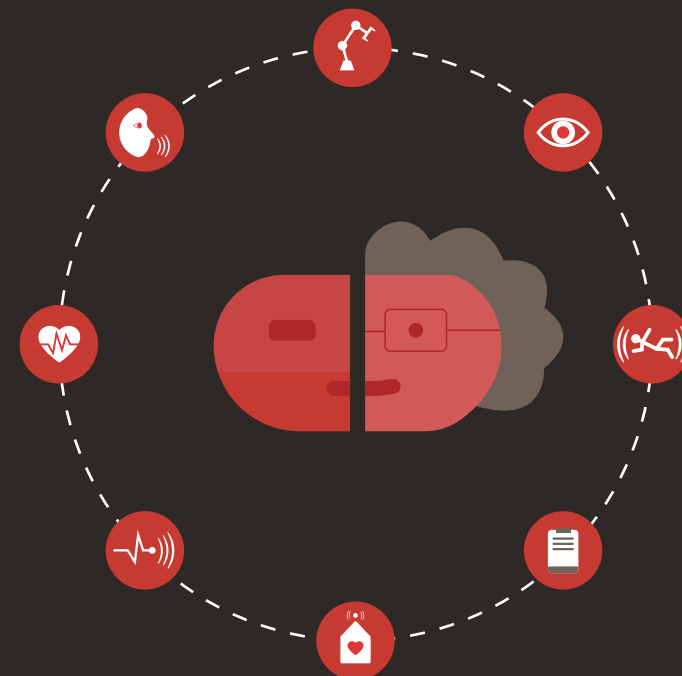
The Unit for Social Innovation and  
Research "Shipyard" - Poland



Bay Zoltan Nonprofit Ltd. for  
Applied Research - Hungary



Softic Ltd. - Hungary



INTEGRATED  
SOLUTIONS  
for  
INNOVATIVE  
ELDERLY CARE